

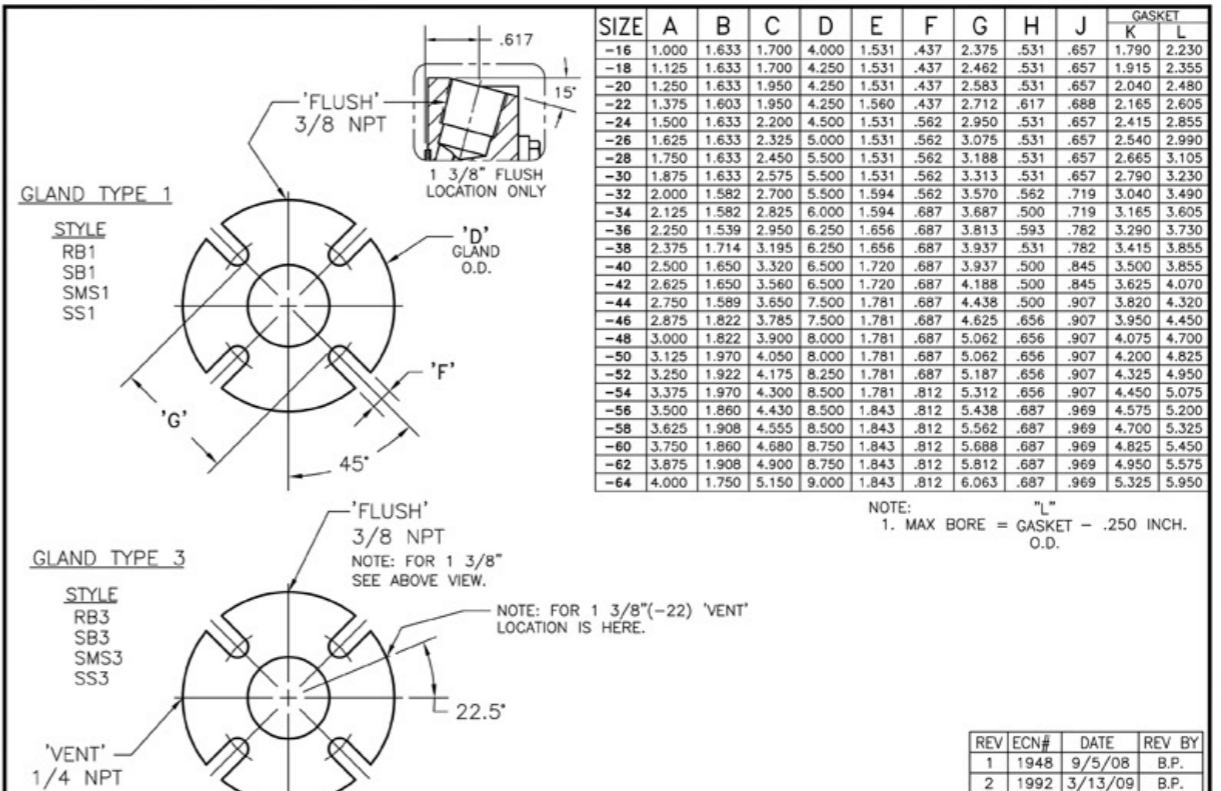
REV	ECN#	DATE	REV BY
1	1948	9/5/08	B.P.
2	1992	3/13/09	B.P.

ARRANGEMENT	DESIGN	GLAND TYPE
R-ROTATING S-STATIONARY	B-BELLOWS S-SPRING MS-MULTI-SPRING	1-FLUSH 3-FLUSH, VENT, DRAIN & THROTTLE BUSHING

**THIRD GENERATION
CARTRIDGE SEALS**

FLEX-A-SEAL P.O. BOX 184 / 1 JACKSON ST.
ESSEX JUNCTION, VT 05453
(802) 878-8307

SK1793 REV. 2
SHEET 1 OF 2



SIZE	GASKET										
	A	B	C	D	E	F	G	H	J	K	L
-16	1.000	1.633	1.700	4.000	1.531	.437	2.375	.531	.657	1.790	2.230
-18	1.125	1.633	1.700	4.250	1.531	.437	2.462	.531	.657	1.915	2.355
-20	1.250	1.633	1.950	4.250	1.531	.437	2.583	.531	.657	2.040	2.480
-22	1.375	1.603	1.950	4.250	1.560	.437	2.712	.617	.688	2.165	2.605
-24	1.500	1.633	2.200	4.500	1.531	.562	2.950	.531	.657	2.415	2.855
-26	1.625	1.633	2.325	5.000	1.531	.562	3.075	.531	.657	2.540	2.990
-28	1.750	1.633	2.450	5.500	1.531	.562	3.188	.531	.657	2.665	3.105
-30	1.875	1.633	2.575	5.500	1.531	.562	3.313	.531	.657	2.790	3.230
-32	2.000	1.582	2.700	5.500	1.594	.562	3.570	.562	.719	3.040	3.490
-34	2.125	1.582	2.825	6.000	1.594	.687	3.687	.500	.719	3.165	3.605
-36	2.250	1.539	2.950	6.250	1.656	.687	3.813	.593	.782	3.290	3.730
-38	2.375	1.714	3.195	6.250	1.656	.687	3.937	.531	.782	3.415	3.855
-40	2.500	1.650	3.320	6.500	1.720	.687	3.937	.500	.845	3.500	3.855
-42	2.625	1.650	3.560	6.500	1.720	.687	4.188	.500	.845	3.625	4.070
-44	2.750	1.589	3.650	7.500	1.781	.687	4.438	.500	.907	3.820	4.320
-46	2.875	1.822	3.785	7.500	1.781	.687	4.625	.656	.907	3.950	4.450
-48	3.000	1.822	3.900	8.000	1.781	.687	5.062	.656	.907	4.075	4.700
-50	3.125	1.970	4.050	8.000	1.781	.687	5.062	.656	.907	4.200	4.825
-52	3.250	1.922	4.175	8.250	1.781	.687	5.187	.656	.907	4.325	4.950
-54	3.375	1.970	4.300	8.500	1.781	.812	5.312	.656	.907	4.450	5.075
-56	3.500	1.860	4.430	8.500	1.843	.812	5.438	.687	.969	4.575	5.200
-58	3.625	1.908	4.555	8.500	1.843	.812	5.562	.687	.969	4.700	5.325
-60	3.750	1.860	4.680	8.750	1.843	.812	5.688	.687	.969	4.825	5.450
-62	3.875	1.908	4.900	8.750	1.843	.812	5.812	.687	.969	4.950	5.575
-64	4.000	1.750	5.150	9.000	1.843	.812	6.063	.687	.969	5.325	5.950

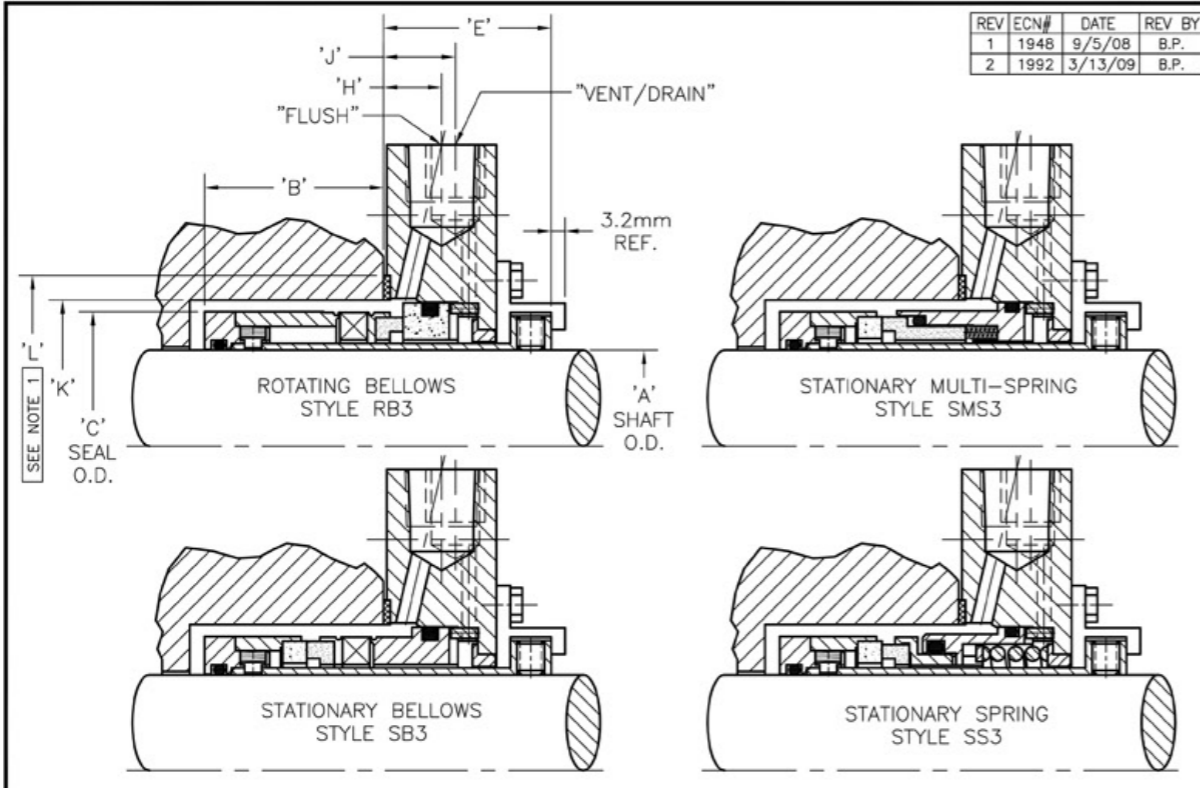
NOTE: "L"
1. MAX BORE = GASKET - .250 INCH.
O.D.

REV	ECN#	DATE	REV BY
1	1948	9/5/08	B.P.
2	1992	3/13/09	B.P.

**THIRD GENERATION
CARTRIDGE SEALS**

FLEX-A-SEAL P.O. BOX 184 / 1 JACKSON ST.
ESSEX JUNCTION, VT 05453
(802) 878-8307

SK1793 REV. 2
SHEET 2 OF 2



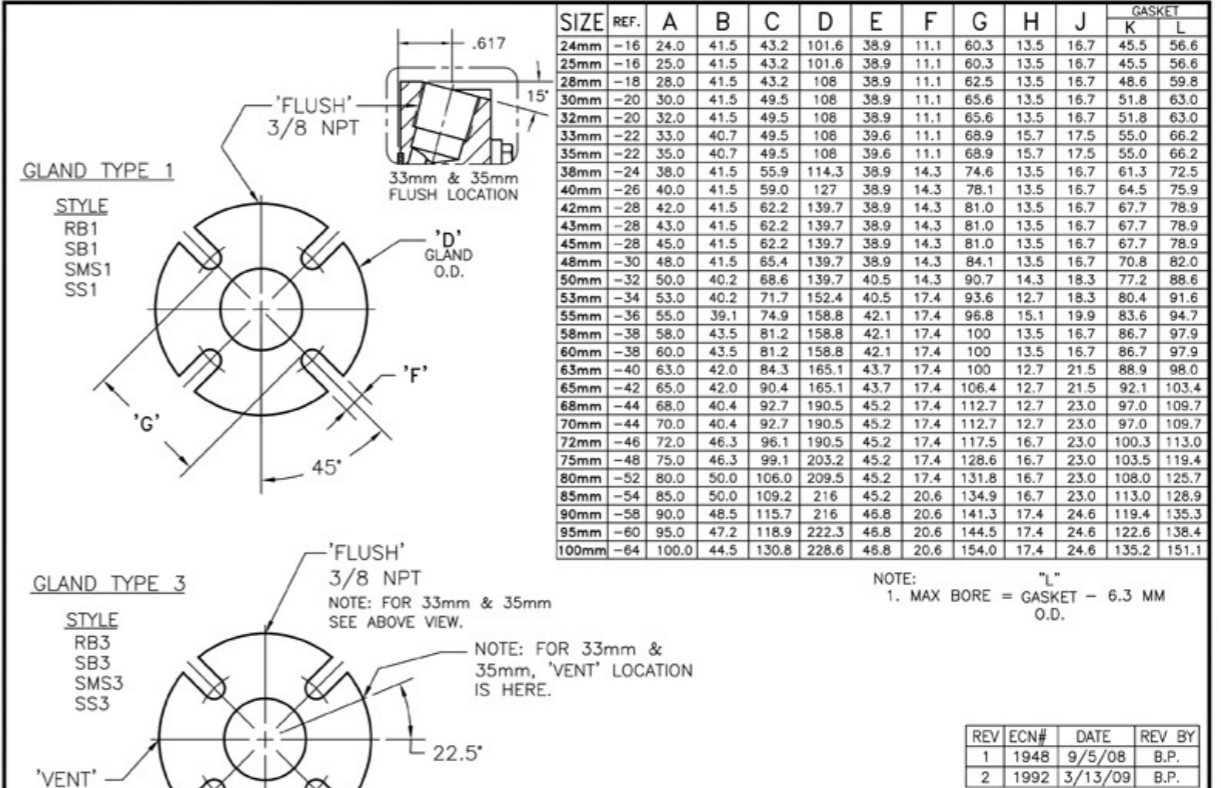
REV	ECN#	DATE	REV BY
1	1948	9/5/08	B.P.
2	1992	3/13/09	B.P.

ARRANGEMENT	DESIGN	GLAND TYPE
R-ROTATING S-STATIONARY	B-BELLOWS S-SPRING MS-MULTI-SPRING	1-FLUSH 3-FLUSH, VENT, DRAIN & THROTTLE BUSHING

**METRIC
THIRD GENERATION
CARTRIDGE SEALS**

FLEX-A-SEAL P.O. BOX 184 / 1 JACKSON ST.
ESSEX JUNCTION, VT 05453
(802) 878-8307

SK1794 REV. 2
SHEET 1 OF 2



SIZE	REF.	GASKET										
		A	B	C	D	E	F	G	H	J	K	L
24mm	-16	24.0	41.5	43.2	101.6	38.9	11.1	60.3	13.5	16.7	45.5	56.6
25mm	-16	25.0	41.5	43.2	101.6	38.9	11.1	60.3	13.5	16.7	45.5	56.6
28mm	-18	28.0	41.5	43.2	108	38.9	11.1	62.5	13.5	18.7	48.6	59.8
30mm	-20	30.0	41.5	49.5	108	38.9	11.1	65.6	13.5	16.7	51.8	63.0
32mm	-20	32.0	41.5	49.5	108	38.9	11.1	65.6	13.5	16.7	51.8	63.0
33mm	-22	33.0	40.7	49.5	108	39.6	11.1	68.9	15.7	17.5	55.0	66.2
35mm	-22	35.0	40.7	49.5	108	39.6	11.1	68.9	15.7	17.5	55.0	66.2
38mm	-24	38.0	41.5	55.9	114.3	38.9	14.3	74.6	13.5	16.7	61.3	72.5
40mm	-26	40.0	41.5	59.0	127	38.9	14.3	78.1	13.5	16.7	64.5	75.9
42mm	-28	42.0	41.5	62.2	139.7	38.9	14.3	81.0	13.5	16.7	67.7	78.9
43mm	-28	43.0	41.5	62.2	139.7	38.9	14.3	81.0	13.5	16.7	67.7	78.9
45mm	-28	45.0	41.5	62.2	139.7	38.9	14.3	81.0	13.5	16.7	67.7	78.9
48mm	-30	48.0	41.5	65.4	139.7	38.9	14.3	84.1	13.5	16.7	70.8	82.0
50mm	-32	50.0	40.2	68.6	139.7	40.5	14.3	90.7	14.3	18.3	77.2	88.6
53mm	-34	53.0	40.2	71.7	152.4	40.5	17.4	93.6	12.7	18.3	80.4	91.6
55mm	-36	55.0	39.1	74.9	158.8	42.1	17.4	96.8	15.1	19.9	83.6	94.7
58mm	-38	58.0	43.5	81.2	158.8	42.1	17.4	100	13.5	16.7	86.7	97.9
60mm	-38	60.0	43.5	81.2	158.8	42.1	17.4	100	13.5	16.7	86.7	97.9
63mm	-40	63.0	42.0	84.3	165.1	43.7	17.4	100	12.7	21.5	88.9	98.0
65mm	-42	65.0	42.0	90.4	165.1	43.7	17.4	106.4	12.7	21.5	92.1	103.4
68mm	-44	68.0	40.4	92.7	190.5	45.2	17.4	112.7	12.7	23.0	97.0	109.7
70mm	-44	70.0	40.4	92.7	190.5	45.2	17.4	112.7	12.7	23.0	97.0	109.7
72mm	-46	72.0	46.3	96.1	190.5	45.2	17.4	117.5	16.7	23.0	100.3	113.0
75mm	-48	75.0	46.3	99.1	203.2	45.2	17.4	128.6	16.7	23.0	103.5	119.4
80mm	-52	80.0	50.0	106.0	209.5	45.2	17.4	131.8	16.7	23.0	108.0	125.7
85mm	-54	85.0	50.0	109.2	216	45.2	20.6	134.9	16.7	23.0	113.0	128.9
90mm	-58	90.0	48.5	115.7	216	46.8	20.6	141.3	17.4	24.6	119.4	135.3
95mm	-60	95.0	47.2	118.9	222.3	46.8	20.6	144.5	17.4	24.6	122.6	138.4
100mm	-64	100.0	44.5	130.8	228.6	46.8	20.6	154.0	17.4	24.6	135.2	151.1

NOTE: "L"
1. MAX BORE = GASKET - 6.3 MM
O.D.

REV	ECN#	DATE	REV BY
1	1948	9/5/08	B.P.
2	1992	3/13/09	B.P.

**METRIC
THIRD GENERATION
CARTRIDGE SEALS**

FLEX-A-SEAL P.O. BOX 184 / 1 JACKSON ST.
ESSEX JUNCTION, VT 05453
(802) 878-8307

SK1794 REV. 2
SHEET 2 OF 2