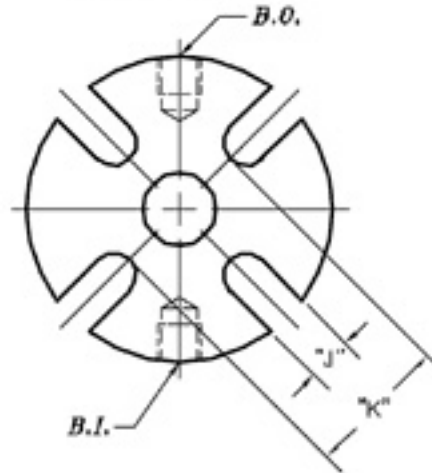
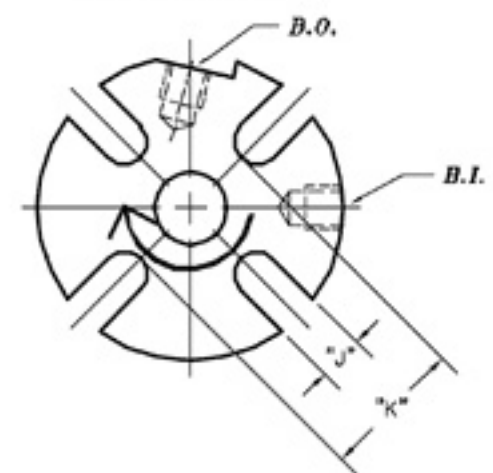


SIZE	A	B	C	D	E	F	G	H	J	K
-16	1.000	1.887	1.750	2.152	2.025	2.082	1.898	4.125	.437	2.463
-18	1.125	1.894	1.750	2.152	2.031	2.082	1.898	4.250	.437	2.463
-20	1.250	1.937	2.000	2.400	2.082	2.125	1.760	4.250	.437	2.583
-22	1.375	1.944	2.000	2.482	2.082	2.031	1.865	4.250	.437	2.813
-24	1.500	2.188	2.250	2.652	2.250	2.125	1.760	4.500	.563	3.063
-26	1.625	2.312	2.375	2.812	2.210	2.125	1.760	5.000	.563	3.125
-28	1.750	2.437	2.500	2.834	2.337	2.125	1.760	5.500	.563	3.188
-30	1.875	2.562	2.625	2.959	2.337	2.125	1.760	5.500	.563	3.313
-32	2.000	2.687	2.750	3.250	2.337	2.125	1.760	5.500	.563	3.570
-34	2.125	2.812	3.000	3.484	2.400	2.125	1.760	6.000	.688	3.813
-36	2.250	2.937	3.125	3.484	2.400	2.125	1.760	6.250	.688	3.813
-38	2.375	3.187	3.250	3.822	2.312	2.250	1.884	6.250	.688	3.938
-40	2.500	3.312	3.375	3.714	2.407	2.194	1.828	6.500	.688	4.125
-42	2.625	3.437	3.625	4.280	2.482	2.625	2.260	6.500	.688	4.375
-44	2.750	3.825	3.750	4.250	2.300	2.489	2.103	7.500	.688	4.825
-46	2.875									
-48	3.000	3.930	4.000	4.812	2.573	2.770	2.238	8.000	.688	4.875
-50	3.125									
-52	3.250									
-54	3.375									
-56	3.500									
-58	3.625									
-60	3.750	4.825	4.750	5.250	2.719	2.750	2.312	8.750	.813	5.888
-62	3.875									

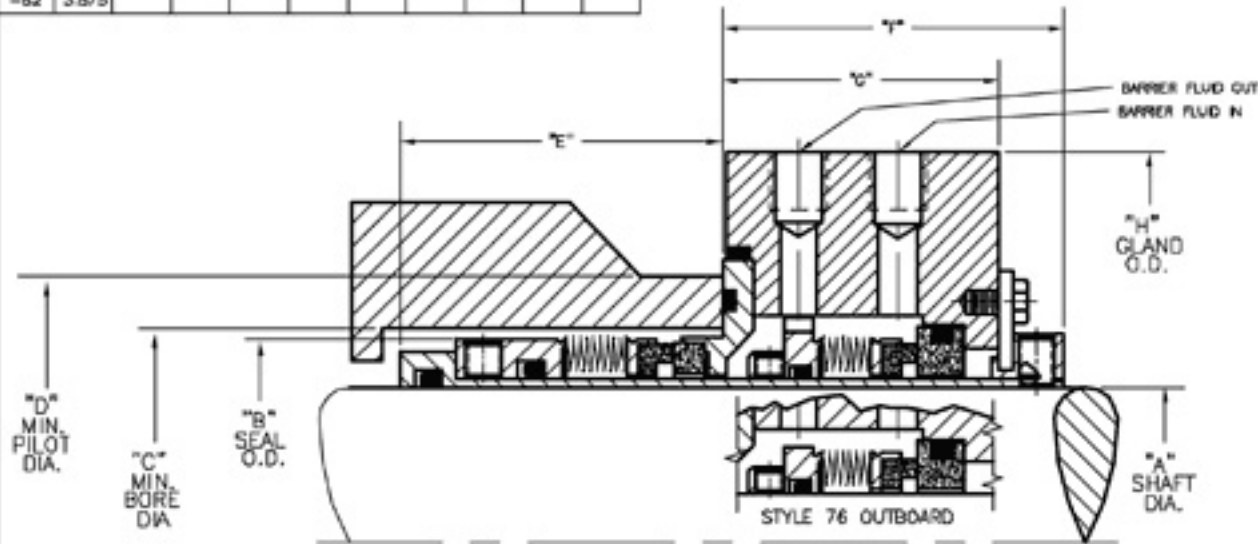
STYLE 78
GLAND END VIEW



STYLE 78
GLAND END VIEW



NOTE: SEAL TO BE USED ON PUMP WITH CLOCKWISE ROTATION AS VIEWED FROM MOTOR END.



	P.O. BOX 184 / 1 BACON ST. ESSEX JUNCTION, VT 05453 (802) 875-8007
	STYLE 76/78 ROTATING METAL BELLOWS DUAL TANDEM CARTRIDGE SEALS
DWG. # SK1117	REV. 1