

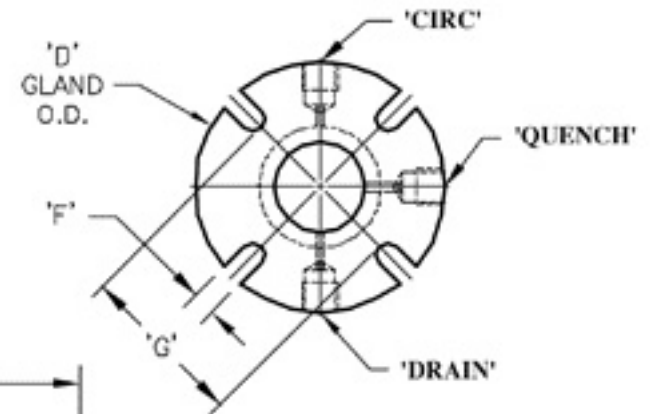
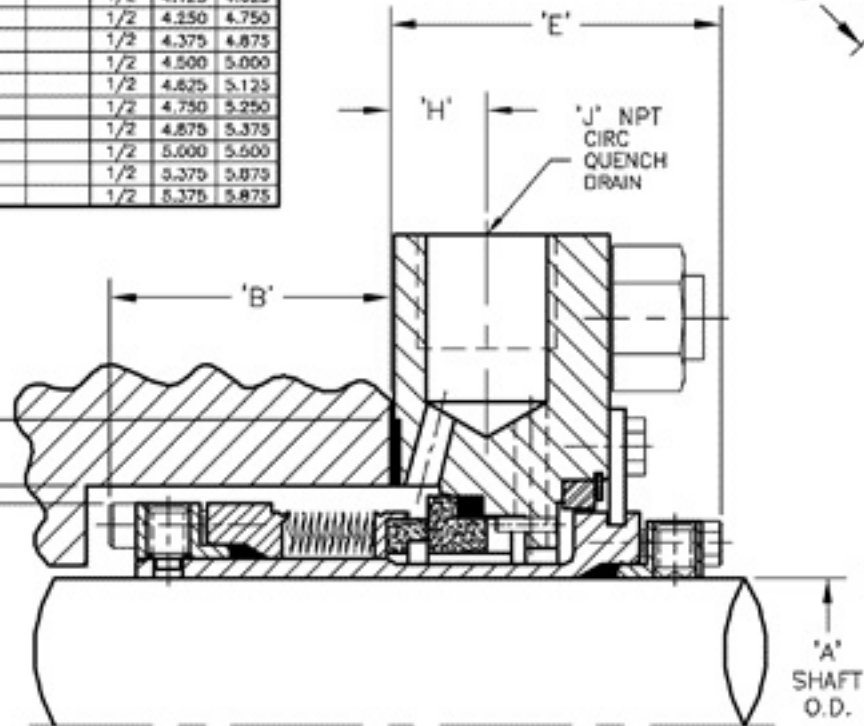
| SIZE | A     | B     | C     | D     | E     | F     | G     | H       | J   | GASKET |       |
|------|-------|-------|-------|-------|-------|-------|-------|---------|-----|--------|-------|
|      |       |       |       |       |       |       |       |         |     | K      | L     |
| -16  | 1.000 |       | 1.812 |       |       |       |       |         | 3/8 | 2.000  | 2.375 |
| -18  | 1.125 |       | 1.937 |       |       |       |       |         | 3/8 | 2.125  | 2.625 |
| -20  | 1.250 |       | 2.170 |       |       |       |       |         | 3/8 | 2.250  | 2.750 |
| -22  | 1.375 | 1.680 | 2.295 | 4 3/4 | 1.986 | 9/16  | 3.075 | 500/808 | 3/8 | 2.500  | 3.000 |
| -24  | 1.500 | 1.680 | 2.420 | 5 1/4 | 1.986 | 9/16  | 3.200 | .593    | 1/2 | 2.625  | 3.125 |
| -26  | 1.625 | 1.680 | 2.545 | 5 1/2 | 1.986 | 9/16  | 3.325 | .593    | 1/2 | 2.750  | 3.250 |
| -28  | 1.750 | 1.680 | 2.670 | 5 3/4 | 1.986 | 9/16  | 3.450 | .593    | 1/2 | 2.875  | 3.375 |
| -30  | 1.875 | 1.680 | 2.795 | 6"    | 2.048 | 9/16  | 3.700 | .710    | 1/2 | 3.125  | 3.625 |
| -32  | 2.000 | 1.830 | 2.920 | 6 1/4 | 2.048 | 11/16 | 3.825 | .710    | 1/2 | 3.250  | 3.750 |
| -34  | 2.125 | 1.830 | 3.045 | 6 1/4 | 2.048 | 11/16 | 3.950 | .710    | 1/2 | 3.375  | 3.875 |
| -36  | 2.250 | 1.830 | 3.187 | 6 1/2 | 2.048 | 11/16 | 4.075 | .710    | 1/2 | 3.500  | 4.000 |
| -38  | 2.375 | 1.830 | 3.312 | 6 1/2 | 2.111 | 11/16 | 4.075 | .710    | 1/2 | 3.500  | 4.000 |
| -40  | 2.500 | 1.830 | 3.437 | 6 1/2 | 2.100 | 11/16 | 4.200 | .757    | 1/2 | 3.625  | 4.125 |
| -42  | 2.625 | 1.830 | 3.625 | 6 3/4 | 2.111 | 11/16 | 4.450 | .757    | 1/2 | 3.875  | 4.375 |
| -44  | 2.750 | 1.800 | 3.750 | 7 1/2 | 2.125 | 11/16 | 4.575 | .762    | 1/2 | 4.000  | 4.500 |
| -46  | 2.875 | 1.800 | 3.875 |       | 2.125 | 11/16 |       |         | 1/2 | 4.125  | 4.625 |
| -48  | 3.000 | 1.800 | 4.000 |       | 2.125 | 11/16 |       |         | 1/2 | 4.250  | 4.750 |
| -50  | 3.125 | 4.125 |       |       |       | 11/16 |       |         | 1/2 | 4.375  | 4.875 |
| -52  | 3.250 | 4.250 |       |       |       | 11/16 |       |         | 1/2 | 4.500  | 5.000 |
| -54  | 3.375 | 4.375 |       |       |       | 13/16 |       |         | 1/2 | 4.625  | 5.125 |
| -56  | 3.500 | 4.500 |       |       |       | 13/16 |       |         | 1/2 | 4.750  | 5.250 |
| -58  | 3.625 | 4.625 |       |       |       | 13/16 |       |         | 1/2 | 4.875  | 5.375 |
| -60  | 3.750 | 4.750 |       |       |       | 13/16 |       |         | 1/2 | 5.000  | 5.500 |
| -62  | 3.875 | 5.125 |       |       |       | 13/16 |       |         | 1/2 | 5.375  | 5.875 |
| -64  | 4.000 | 5.125 |       |       |       | 13/16 |       |         | 1/2 | 5.375  | 5.875 |

NOTE:  
 $\frac{1}{2}$ "  
 MAX BORE = GASKET - .250"  
 O.D.

'L'  
 GASKET  
 O.D.  
 SEE NOTE 1

'K'  
 GASKET  
 I.D.

'C'  
 SEAL  
 O.D.





P.O. BOX 194 / 1 JACKSON ST.  
 ESSEX JUNCTION, VT 05453  
 (802) 878-8337

**STYLE 66**  
 HIGH TEMPERATURE ROTATING WELDED  
 METAL BELLOWS CARTRIDGE SEAL

DWG.# **SK1847**      REV.